



San Lorenzo SD 92

EUR 3,790,000



Specifications

Boat Details

| | | | |
|------------|---------------|-------------|--------------|
| Price | EUR 3,790,000 | Boat Brand | SANLORENZO |
| Model | SD92 | Length | 27.60 |
| Year | 2014 | Category | Motor Yachts |
| Hull Style | Single | Hull Type | GRP |
| Power Type | Power | Condition | Used |
| Suburb | ROZELLE | Engine Make | MTU |

Disclaimer

Our company offers the details of this vessel in good faith but cannot guarantee or warrant the accuracy of this information nor warrant the condition of the vessel. A buyer should instruct his agents and/or surveyors to investigate such details buyer desires validated. This vessel is offered subject to prior sale, price change or withdrawal without notice.

Description

SANLORENZO SD92

This 27.6m SANLORENZO SD92 luxury yacht for sale was designed by Francesco Paszkowski and built in GRP by the Italian yard Sanlorenzo to RINA class and delivered in 2014 as one of the yard's semi-displacement SD92 motor yacht models. Twin 1224 Hp MTU diesel engines give her a range of 1,660 nautical miles at 11 knots.

Although she has only been used private since her launch, she is MCA compliant and can accommodate 8 guests in 4 en-suite cabins consisting of a main deck master suite, two VIP suites and a twin cabin, all with entertainment centres, television screens and en suite bathroom facilities. In addition, there is a further cabin currently used as a gymnasium. This cabin could easily be converted into another twin if the new owner desired, making this SD92 a 10 guest 5 cabin yacht. There are also quarters for 4 crew in 3 cabins.

The saloon, decorated in modern soothing white lacquered wooden panelling, has a large L-shaped settee to port facing a sophisticated entertainment centre including a 46-inch Samsung television screen and a Bose stereo surround sound system, and there is a semi-formal dining area forward with cabinet storage for glassware, china and silver.

The sheltered aft deck, with steps down to the bathing platform and double tender garage, has built-in upholstered seating and a large table for al fresco dining, while the flybridge offers further outdoor dining and lounging areas as well as a helm station, complete with Hard-Top. In addition, there is a generous private foredeck seating/relaxing area.

The yacht presents in exceptional technical and aesthetical condition. The elegant and timeless design of the Sanlorenzo SD92 boasts a fantastic layout and cool contemporary decor making her perfect for long-range cruising in the utmost comfort and style.

This SANLORENZO SD92 has one of the highest build specifications including zero-speed stabilizers and a new Williams 435 Jet tender. Early viewings and offers recommended.

KEY FEATURES

- Zero-Speed Stabilizers
- Main Deck Master Suite
- Option to easily convert to 5 Cabins
- Flybridge Hard-Top
- Never chartered, always Privately owned
- New Williams Sport Jet 435 (2018) Tender
- British Registered under 24m
- Excellent Condition

MAIN CHARACTERISTICS

Disclaimer

Our company offers the details of this vessel in good faith but cannot guarantee or warrant the accuracy of this information nor warrant the condition of the vessel. A buyer should instruct his agents and/or surveyors to investigate such details buyer desires validated. This vessel is offered subject to prior sale, price change or withdrawal without notice.

Builder: Sanlorenzo Yacht (Italy)
Model: Sanlorenzo SD92
Hull Number: 33
Designer: Francesco Paszkowski
Interior Designer: Sanlorenzo & Owner
Type: Motor-Yacht / Flybridge Yacht / Semi-displacement Hull
Hull: GRP
Superstructure: GRP
Decks: Teak
Built: 2014
LOA: 27.60 m (90' 07")
LWL: 23.95 m (78' 07")
Beam: 7.05 m (23' 02")
Draft: 1.80 m (5' 11")
Displacement: 103 tons
Gross Tonnage: 97 tons
Flag of Registry: United Kingdom
Classification: RINA plus MCA compliance Built to CE standards
Lying: Italian Riviera (Liguria), Italy

PROPULSION

Engines: 2 x 1224 Hp MTU 10V 2000 M72
Engine Hours: 1500 h (May 2019)
Cruise Speed: 11 knots
Max Speed: 17 knots
Range: 1,660 nm @ 11 knots
Fuel Consumption: 110 l/h @ 11 knots
Two parallel shaft line systems
Reverse reduction gear unit ZF 2150 A
Five-blade fixed propellers
Shaft AQUAMET 17 Diameter 90mm

TANKAGE

Fuel Capacity: 16,000 l (4,227 USG)
Fresh Water Capacity: 2,500 l (660 USG)
Black & Grey Water Tanks: 1,000 l (264 USG)

ACCOMMODATION

8 Guests in 4 en-suite cabins
Possible to convert in 5 cabins easily
Gym
4 Crew in 3 cabins
Day-head on main deck
Features a light and modern interior with great outside areas.
Her accommodation is for 7 guests consisting of an owner's stateroom on the main deck, 2 VIP staterooms and a twin

Disclaimer

Our company offers the details of this vessel in good faith but cannot guarantee or warrant the accuracy of this information nor warrant the condition of the vessel. A buyer should instruct his agents and/or surveyors to investigate such details buyer desires validated. This vessel is offered subject to prior sale, price change or withdrawal without notice.

stateroom on the lower deck with additional gym (1 x cyclette Technogym, 1 x Bench Technogym, Free weights) instead of a stateroom.

ELECTRICAL

Electrical System: 380V/230V/24V

1 x KOHLER 33 kW Generator (2800 h approx. May 2019)

1 x KOHLER 40 kW Generator (2800 h approx. May 2019)

MASTERVOLT Battery chargers

MASTERVOLT Inverters

Shore power inlet

ANCILLARY EQUIPMENT

Zero Speed stabilisers: CMC

Bow Thruster: CMC Electric

Air Conditioning: CONDARIA 2 x compressors WM/FCC 45002-CO31.12

Fuel Filtration: ALPHA LAVAL MIB 303513/33, RACOR pre-filters

Hydraulic Steering System: 2 motors on Steering rams, BSC electronic steering system

Water Maker: IDROMAR MC3J 180l/h)

ELECTRONICS AND NAVIGATION SYSTEMS

Autopilot: SIMRAD AP28

GPS/Plotters: SIMRAD

Monitors: 2 Monitors 24"

Radar: SIMRAD

TV Satellite: KVH G6

VHF: SIMRAD HS90

CCTV: PANASONIC (1 camera on aft deck, 1 in engine room, 1 along port side deck)

GALLEY AND LAUNDRY

Dishwasher: MIELE

Hob: MIELE

Hood: MIELE

Microwave: MIELE G6160SCVI

Oven: MIELE

Refrigerator: GE

Washing Machine: MIELE Edition 111 W5877

Dryer: MIELE Edition 111 T8813C

Wine Cooler: GAGGENAU 41/38 bottles

DECK EQUIPMENT

2 x Anchors 70kg

Disclaimer

Our company offers the details of this vessel in good faith but cannot guarantee or warrant the accuracy of this information nor warrant the condition of the vessel. A buyer should instruct his agents and/or surveyors to investigate such details buyer desires validated. This vessel is offered subject to prior sale, price change or withdrawal without notice.

2 x 100m anchor-chains 14 diam
2 x LEWMAR anchor windlasses with capstans
2 x LEWMAR stern mooring winches
BEZENSONI Electro-hydraulic passerelle
Swim ladder
Hard-top on Flybridge

TENDER

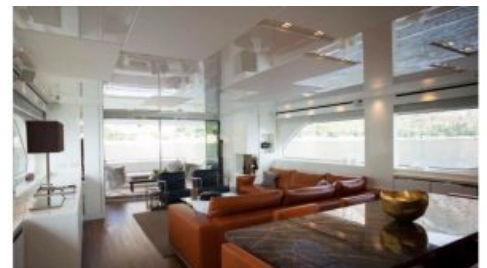
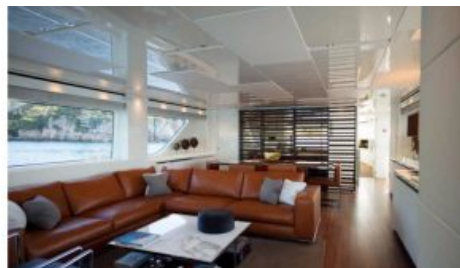
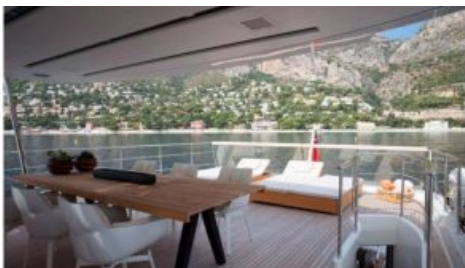
WILLIAMS Sport Jet 435 (2018)

Engine Details 1

| | |
|--------------|--------|
| Engine Make | MTU |
| Engine Hours | 1500 |
| Displacement | 103 |
| Horse Power | 1224 |
| Fuel Type | Diesel |
| Drive Type | 9 |

Engine Details 2

| | |
|--------------|--------|
| Engine Make | MTU |
| Engine Hours | 1500 |
| Displacement | 103 |
| Horse Power | 1224 |
| Fuel Type | Diesel |
| Drive Type | 9 |



Disclaimer

Our company offers the details of this vessel in good faith but cannot guarantee or warrant the accuracy of this information nor warrant the condition of the vessel. A buyer should instruct his agents and/or surveyors to investigate such details buyer desires validated. This vessel is offered subject to prior sale, price change or withdrawal without notice.



Disclaimer

Our company offers the details of this vessel in good faith but cannot guarantee or warrant the accuracy of this information nor warrant the condition of the vessel. A buyer should instruct his agents and/or surveyors to investigate such details buyer desires validated. This vessel is offered subject to prior sale, price change or withdrawal without notice.