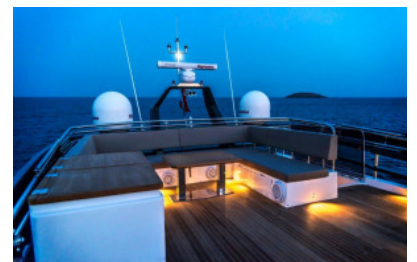




**Numarine 105 HT 1/4 Share**

3,450,000 per 1/4 share



**Specifications**

**Boat Details**

Price	3,450,000 per 1/4 share	Boat Brand	Numarine
Model	105 HT	Length	32.00
Year	2019	Category	Motor & Power Boats
Hull Style	Single	Hull Type	Fibreglass
Power Type	Power	Condition	New
Suburb	ROZELLE	Engine Make	CAT C32 1825 HP

**Disclaimer**

Our company offers the details of this vessel in good faith but cannot guarantee or warrant the accuracy of this information nor warrant the condition of the vessel. A buyer should instruct his agents and/or surveyors to investigate such details buyer desires validated. This vessel is offered subject to prior sale, price change or withdrawal without notice.

## Description

ASSERTIVE ELEGANCE, VIRILE BRAVADO

You'll be proud to welcome your discerning guests aboard the 105 Hardtop which combines graceful aesthetics, ultra-modern interiors and advanced high-tech engineering to deliver the ultimate luxury performance with an unparalleled sensory experience unlike no other.

The custom luxurious finishes and hand selected high end materials used throughout the 105 Hardtop offer the absolute "first class" experience and the impressive exterior areas provide plenty of gracious and refined alfresco space for entertaining guests.

Key design attributes deliver the functionality, comfort and speed synonymous with the Numarine mantra coupled with striking aesthetics and exceptional use of space delivering a motoryacht that can do it all and in style.

The design consideration extends from the cleverly appointed flybridge - a feature that brings the "best of both worlds" to this extravagant hardtop model to the abundance of outside lounging areas, the immense interior lounge and dining space, lavish galley and cabin accommodation are all bathed in natural light, further enhancing the plentiful feeling of space.

The Numarine 105 Hardtop joins a class of performance motoryachts that set the industry trends of today and will become an industry reference model for the future.

Price per share: \$3.45 Million

Share: 1/4

Max persons per share 2

Ongoing costs: TBA

Location: Sydney Superyacht Marina Rozelle

Duration: 3 years

Usage: 86 days + Unlimited stand by

Exit strategy: sale of boat to be equally divided

Booking: Online Booking Calender

Break down of ongoing

\* Berthing

\* Registration / Insurance

\*Re Fueling

---

### Disclaimer

Our company offers the details of this vessel in good faith but cannot guarantee or warrant the accuracy of this information nor warrant the condition of the vessel. A buyer should instruct his agents and/or surveyors to investigate such details buyer desires validated. This vessel is offered subject to prior sale, price change or withdrawal without notice.

\* Servicing and Maintenance

\* Cleaning and detailing

\*Management

Please contact Paul Miletta +61 418162222 for full prospectus.

## Engine

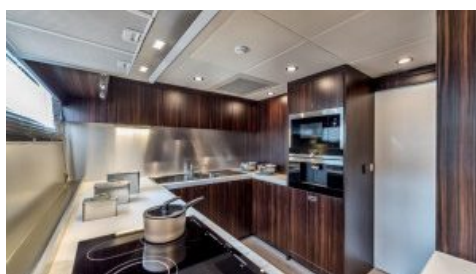
Horse Power (hp) 1825

## Engine Details 1

Engine Make CAT C32 1825 HP  
Horse Power 1825  
Drive Type 4

## Engine Details 2

Engine Make CAT C32 1825 HP  
Horse Power 1825  
Drive Type 4



## Disclaimer

Our company offers the details of this vessel in good faith but cannot guarantee or warrant the accuracy of this information nor warrant the condition of the vessel. A buyer should instruct his agents and/or surveyors to investigate such details buyer desires validated. This vessel is offered subject to prior sale, price change or withdrawal without notice.